

Dear [member_name_first],

Welcome to our June 2010 edition. This monthly newsletter showcases design solutions that The Schimberg Group provides to its clients. The Schimberg Group understands that collaboration is fundamental towards achieving best practices, sustainable success and **Extraordinary Results**.

President's Corner:

You Never Get a Second Chance to Make a Good First Impression

“The lobby space type includes foyers, entries to halls, and security screening areas at or near the entrance to a building or demarcated space, and are meant to welcome and direct tenants and visitors, control access, and provide exit ways from buildings. This space type is often designed with both secure and non-secure areas. Building lobbies often serve as the "public face" of building interiors. The character and function of a lobby space often influence a visitor's first impression upon entering a building. Key design concerns for this space type include balancing aesthetics, security, and operational considerations. “

-Cecily Channel, National Institute of Building Science Whole Building Design Guide

Whether a lobby for a grand hotel or a small office complex, the entry space sets the tone for how a patron or employee experiences the building. It should incorporate a unique element like a signage wall, reception desk, or fountain. Lighting is important to create ambience and give flexibility to light the space during different parts of the day. Material selections should be sustainable to withstand traffic and also create an aesthetic interest to keep people coming back. A well designed lobby

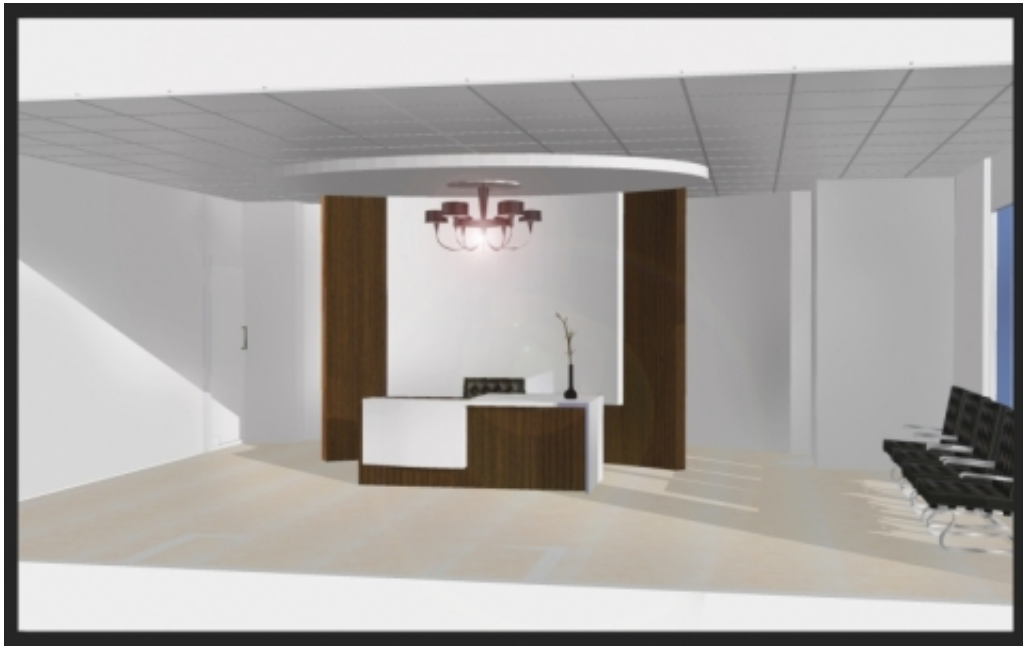
adds value to both the owner of the building and the tenants within it.

- *Barron Schimberg, AIA*
LEED AP

Featured Projects:



ABOVE - RENDERING OF PROPOSED LOBBY CEILING AND INSTALLATION IN PROGRESS. SCHEDULED COMPLETION JUNE 2010.



ABOVE - PROPOSED LOBBY FOR A FINANCIAL INSTITUTION'S OFFICE BY TSG.
BELOW - EXISTING CONDOMINIUM LOBBY AND PROPOSED RENDERING FOR A NEW UPGRADED ENTRY VESTIBULE BY TSG.



Please visit our **UPDATED** blog to participate in discussions about architecture, sustainability, and our built environment. [TSG-Blog](#)

We look forward to working with you to create architectural solutions that exceed your expectations.

Sincerely,



Barron Schimberg, AIA
LEED AP
The Schimberg Group, Inc.
Collaborative Methods. Extraordinary Results.



[Send to a friend](#)

This email was sent to **[email]**. To ensure that you continue receiving our emails, please add us to your address book or safe list.

[manage](#) your preferences | [opt out](#) using TrueRemove™

Got this as a forward? [Sign up](#) to receive our future emails.

Email services provided by [Creative Aesthetics](#)