



The Schimberg Group Inc.
Architecture. Interior Design.
Owner Representation. LEED Consulting.

FL# AR 92705

August 2010

www.tsg-fl.com | [TSG-Blog](#)

COLLABORATIVE METHODS
A MONTHLY NEWSLETTER

Dear Reader,

Welcome to our August 2010 edition. This monthly newsletter showcases design solutions that The Schimberg Group provides to its clients. The Schimberg Group understands that collaboration is fundamental towards achieving best practices, sustainable success and **Extraordinary Results**.

President's Corner:

Do Re Mi Fa So La **"TI"** Do

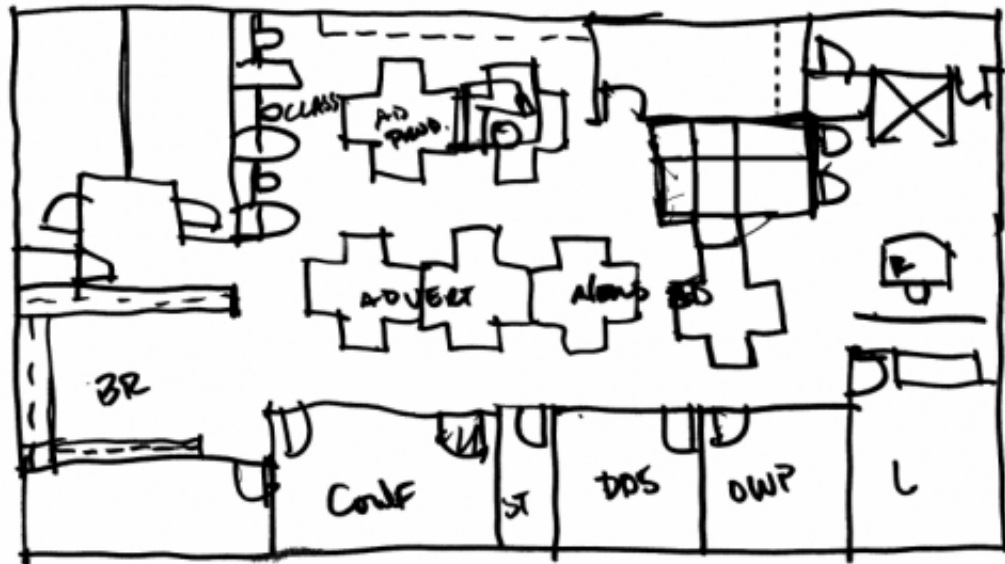
"Most commercial office Lease transactions involve some sort of interior Tenant Improvement ("TI") construction. The project can be as minor as installing new paint and carpet to spruce up a tired space, or as extensive as a full office build-out from a "shell condition". Unless a space is specifically offered "as-is", Landlords typically provide some sort of TI Allowance - usually dollars/Rentable Square Feet ("RSF") - as part of the Lease package offered to prospective Tenants."

-Guidance, Corporate Realty Advisor

As businesses find more opportunities to lease space, building owners find more opportunities to build-out their office spaces to accommodate their tenants in order to create long term leases and cash flow. An architect can help a building owner secure a tenant by providing space planning and subsequently the final design.

*- Barron Schimberg, AIA
LEED AP*

Featured Projects:



ABOVE- INITIAL SKETCH PROVIDED BY THE SCHIMBERG GROUP TO HELP BUILDING OWNER SECURE TENANT





EXAMPLES OF COMMERCIAL TENANT IMPROVEMENT PROJECTS CURRENTLY UNDER CONSTRUCTION BY THE SCHIMBERG GROUP

Please visit our blog to participate in discussions about architecture, sustainability, and our built environment. [TSG-Blog](#)

We look forward to working with you to create architectural solutions that exceed your expectations.

Sincerely,

Barron Schimberg, AIA
LEED AP

The Schimberg Group, Inc.
Collaborative Methods. Extraordinary Results.

[Send to a friend](#)

This email was sent to [email]. To ensure that you continue receiving our emails, please add us to your address book or safe list.

[manage](#) your preferences | [opt out](#) using TrueRemove™

Got this as a forward? [Sign up](#) to receive our future emails.

Email services provided by [Creative Aesthetics](#)