



The Schimberg Group Inc.
Architecture. Interior Design.
Owner Representation. LEED Consulting.

FL# AR 92705

NOVEMBER 2009

www.tsg-fl.com | [TSG-Blog](#)

COLLABORATIVE METHODS
A MONTHLY NEWSLETTER

Dear [member_name_first],

Welcome to our November 2009 edition. This monthly newsletter showcases design solutions that The Schimberg Group provides to its clients.

The Schimberg Group understands that collaboration is fundamental towards achieving best practices, sustainable success and **Extraordinary Results**.

President's Corner:

The Finishing Touch

"I don't divide architecture, landscape and gardening; to me they are one."

- *Luis Barragan*
Architect

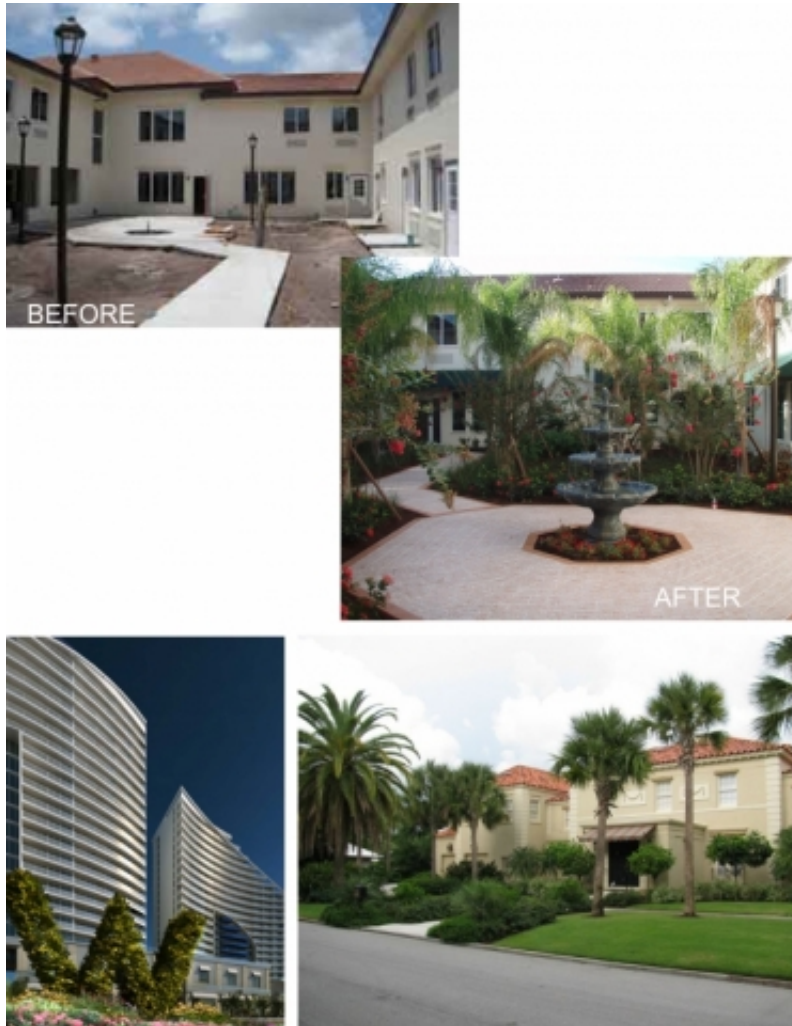
A building is only as good as it's surrounding landscaping. Landscaping provides the following:

- Layering for visual appreciation
- Natural elements connecting the structure to it's environment
- Color variation
- Unique elements to enhance entryways or featured areas

It is critical for architects to approach projects, large or small, commercial or residential with landscaping in mind from the start of the design. By collaborating with the landscape designer or architect, a cohesive relationship between structure and plantings allows for a more successful project and a more complete design.

- Barron Schimberg, AIA
Leed AP

Featured Projects:



CLOCKWISE FROM ABOVE:

BEFORE AND AFTER- LANDSCAPE FOR AN ACLF DESIGNED BY SWCO & INSTALLED BY TURNER TREE

LANDSCAPE FOR A FLORIDA RESIDENCE DESIGNED AND INSTALLED BY GRANTS GARDENS

LANDSCAPE FOR A W HOTEL IN FT. LAUDERDALE DESIGNED BY WITKIN HULTS DESIGN GROUP

Please visit our blog to participate in discussions about architecture, sustainability, and our built environment. [TSG-Blog](#)

We look forward to working with you to create architectural solutions that exceed your expectations.

Sincerely,



Barron Schimberg, AIA
LEED AP

The Schimberg Group, Inc.

Collaborative Methods. Extraordinary Results.



[Send to a friend](#)

This email was sent to **[email]**. To ensure that you continue receiving our emails, please add us to your address book or safe list.

[manage](#) your preferences | [opt out](#) using **TrueRemove**tm

Got this as a forward? [Sign up](#) to receive our future emails.

Email services provided by [Creative Aesthetics](#)